

TABLEAU USER GUIDE

HOW TO NAVIGATE DASHBOARDS

1

Disparities persist after college completion

Data shown here is pulled from the Statewide Longitudinal Educational Data System (SLEDS) and shows median annual earnings and employment status for college graduates at one, two, three, and four years following graduation.

Select Year of Graduation

2015

Select Award Type

Any Sub-Baccalaureate...

Associate Degree

Bachelor's Degree

Select Graduate Race/Ethnicity

(All)

American Indian or Alaskan...

Black or African American

Asian

Hispanic

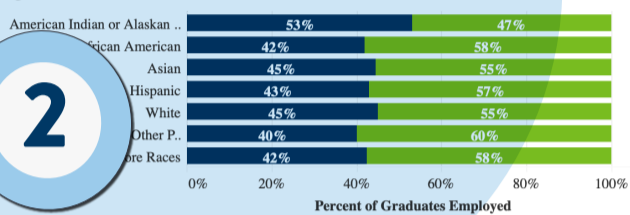
White

Native Hawaiian or Other...

Two or More Races

2

Percent of graduates with a Bachelor's Degree employed, 1 Year post-graduation



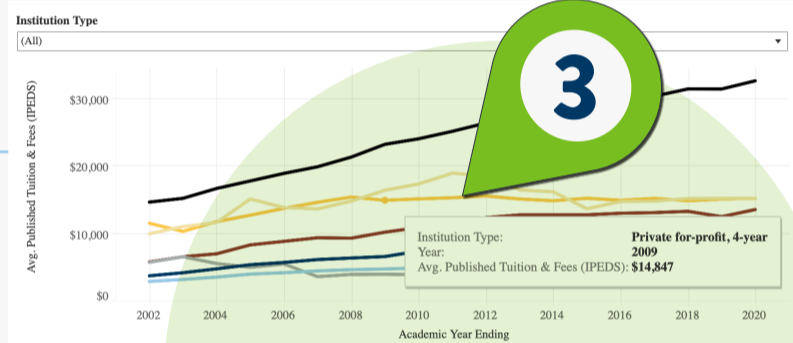
Visualizing and Sorting

3. Hover over the chart or table to view data point details. A "tool tip" will display the data used in the chart.
4. Sort the data in the tables by moving your mouse to any column heading. An arrow will appear. Click in arrow and data will be sorted by highest to lowest number or alphabetically as appropriate.

Selecting and Filtering

1. Select each tab at the top of the dashboard to explore the topics. The shown data charts pertain to the highlighted topic on the top bar.
2. Filter different views of data by selecting the various options displayed in this section of the dashboard.

3



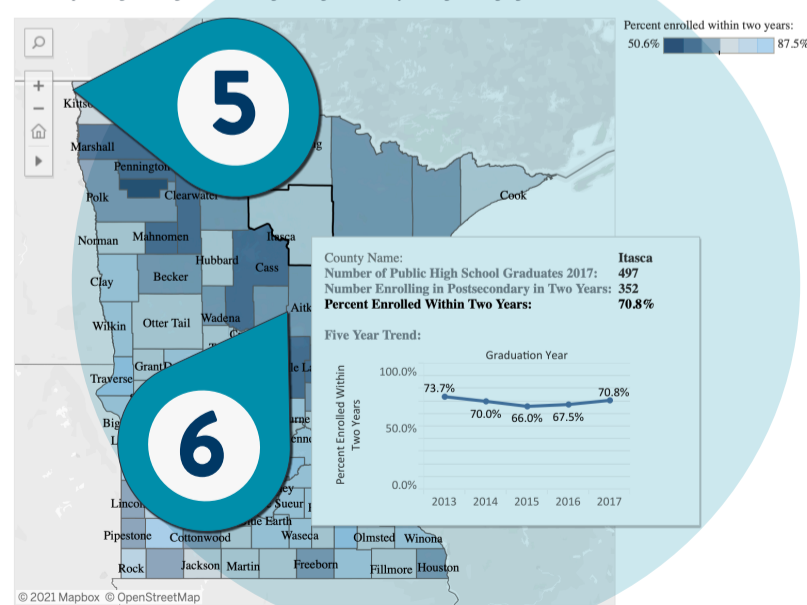
4

Institution Type	Avg. Percent Change Year to Year 2002-2019	Avg. Percent Change Year to Year Since 2010
Private nonprofit, 2-year	5.4%	1.7%
Minnesota State Universities, 4-year	5.3%	2.9%
Private nonprofit, 4-year	4.0%	4.0%
University of Minnesota, 4-year	2.1%	2.1%
Minnesota State Colleges, 2-year	1.6%	1.6%
Private for-profit, 2-Year	-1.4%	-1.4%
Private for-profit, 4-year	0.1%	0.1%

Decreases in average costs over time for-profit institutions reflect that we have fewer for-profit institutions operating in Minnesota since 2010.

Disparities in college enrollment rates also exist by geography

Percent of public high school graduates enrolling in college within two years of graduating high school - class of 2017



Navigating the Map

5. Zoom in or out to explore the Minnesota map and find the county of your choice.
6. Hover over a county of your interest to view enrollment data for the selected county. A "tool tip" will display the data used in the heat map, including a five-year trend chart.